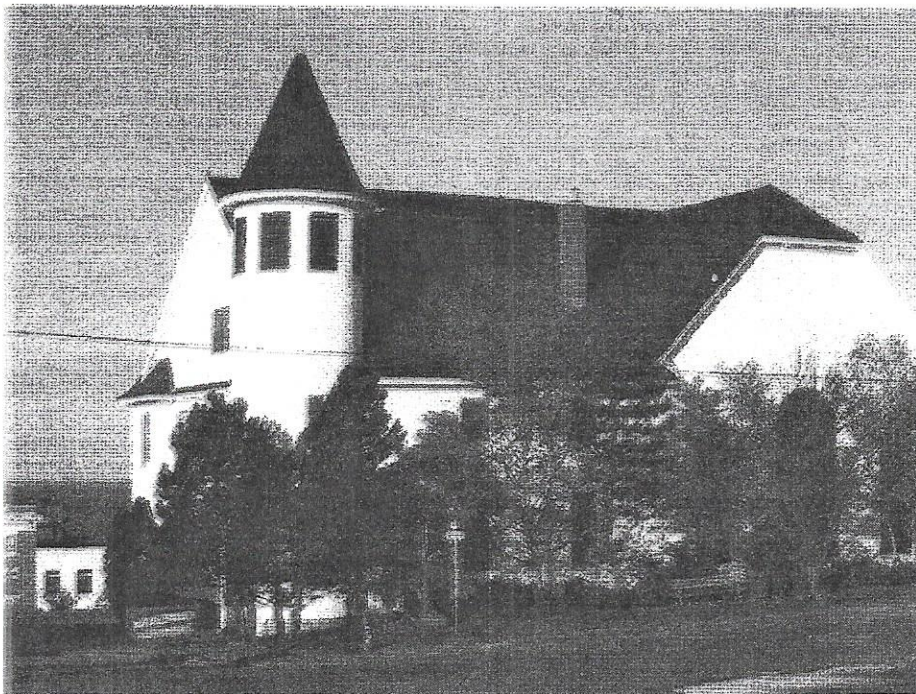


Springhill Pastoral Charge  
St. Andrew's-Wesley United Church  
Springhill, Nova Scotia



COMMUNITY OF FAITH PROFILE

MAY 2020

# Community of Faith Story Committee

## St. Andrew's - Wesley United Church

The following persons served on the 2020 committee on behalf of the congregation of St. Andrew's-Wesley United Church and hereby present through this comprehensive report their findings of the ministry needs for continued operation, spiritual nourishment and financial stability.

**K Ruth Gamble, Regional Council Rep for Area 15**

902-660-2699

[kathjohngamble@gmail.com](mailto:kathjohngamble@gmail.com)

**Debbie Park, Chairman**

902-763-2443

[dmhp@eastlink.ca](mailto:dmhp@eastlink.ca)

**Marilyn Meekins, Church Treasurer**

902-397-2662

[bobandmarilyn@eastlink.ca](mailto:bobandmarilyn@eastlink.ca)

**Bonnie Campbell, Secretary**

902-597-2643

[Bbcampbell71@gmail.com](mailto:Bbcampbell71@gmail.com)

**Don Terris**

902-597-2900

[dlterris@eastlink.ca](mailto:dlterris@eastlink.ca)

**George Pepperdine**

902-597-8273

[g.pepper@bellaliant.net](mailto:g.pepper@bellaliant.net)

**Gary Sterling**

902-597-2655

[garysterling@eastlink.ca](mailto:garysterling@eastlink.ca)

St. Andrew's-Wesley United Church is part of Regional Council 15 (Nova Scotia/Bermuda) with the office located in Sackville, NB. Website: [www.ucceast.ca](http://www.ucceast.ca)

## **TABLE OF CONTENTS**

Community Profile	Page 3
Pastoral Charge Profile	Page 8
Resources Profile	Page 10
Position Description	Page 13
Ministry and Skills Profile	Page 14
Terms Profile	Page 15
Recommendations	Page 16
Appendix:	
Financial Statements for January – April 2020	Page 17

## COMMUNITY PROFILE

### **Springhill, Nova Scotia**

Springhill, Nova Scotia, is located in the heart of Cumberland County, about 30 minutes from the Nova Scotia - New Brunswick border, and thus is very centrally located to serve the Atlantic Provinces. Both the CN main line and the Trans-Canada Highway are within 6 kilometres of the town's boundary.

Springhill was first settled in 1790 by three Loyalist veterans of the American War of Independence who came over from the United Empire Loyalist Tantrammar Colony at Sackville, New Brunswick. Others followed and a settlement grew up near the highest land in Cumberland County, a rounded hilltop 228 metres above sea level. The town received its name from one of the earliest settlers who called the place Spring Hill because of the number of water springs on the hillside. The new community was for some years a pioneer agricultural settlement until in 1925 the hillside and surrounding county were laid off in grants.

It is not known when coal was first discovered, but early settlers knew of it and dug it for their own use. With the formation of the Springhill Mining Company in 1870, impetus was given to mining on a large scale. In 1873 this Company built a rail line from Springhill Junction. to Parrsboro and the mines were formally opened in the same year. From five homes in 1871 the town grew rapidly and was incorporated in 1889. The train (VIA Rail) still stops at the station in Springhill Junction upon request.

([www.wanderu.com](http://www.wanderu.com))

In 1884, the mines and railway were purchased by Montreal interests and operated under the name of the Cumberland Railway and Coal Company. The tragic mine disasters of 1956 and 1958 brought an end to large scale coal mining in our community. Two Main Street fires, in 1957 and 1975 have also added to the town's economic problems over the past years. The only evidence today of the part coal played in our past is the Miner's Museum where you may take a tour of a mine.

Despite these setbacks, Springhill continues to progress and has enjoyed a gradual diversification of industry and employment, resulting in a more stable economy.

The opening of the Anne Murray Centre in 1989 has made the town a favourite tourism destination area. The completion and success of a geothermal energy pilot project is one of our largest industries and provides every indication of major industrial growth for our community.

In 2015, Springhill dissolved as a town and became part of the Municipality of Cumberland County. It has a population of approximately 3,000.

For further information check these websites:

[En.wikipedia.org/springhill.ns](http://En.wikipedia.org/springhill.ns)

Municipality of Cumberland web site: [www.cumberlandcounty.ns.ca](http://www.cumberlandcounty.ns.ca)

## **OTHER CHURCHES IN OUR AREA**

All Saints Anglican  
Salvation Army  
St. John the Baptist Roman Catholic, Springhill  
Springhill Baptist

## **MEDICAL FACILITIES IN OUR AREA**

**All Saints Hospital, Springhill:** [www.nshealth.ca](http://www.nshealth.ca)

A 20 bed facility with emergency service on a rotating basis. These beds are used for Restorative Care & Palliative Care. There are 2.5 doctors & 3 part time Nurse Practitioners plus 1 walk-in clinic in Springhill. The hospital has a lab, diagnostic imaging services, physiotherapy, occupational therapy, social work, kidney dialysis, various specialty clinics, making it a busy spot in town. The third floor houses a 10-bed regional inpatient/outpatient addiction services program. There is a helipad on site for emergency Life Flights.

**Cumberland Regional Health Care Center:** [www.nshealth.ca](http://www.nshealth.ca)

The Cumberland Health Authority's state-of-the-art acute care facility opened to patients on Oct. 2002 in Upper Napan just on the outskirts of Amherst, N.S. The CRHCC offers a wide range of programs & services including Level 3 Emergency, ICU, surgery, maternal/child and medical units supported by laboratory, diagnostic imaging, pharmacy, respiratory therapy, physiotherapy and occupational therapy departments. A helipad is on site for Emergency Life Flights.

There are 2 dental clinics: Elm St. Clinic, 64 Main St, and Dr. Randy Ryan, 6 McFarlane St. There is also a dentist at Laurie Springhill Denture Clinic at 16 Mechanic St. There are optometrists and audiologists in Amherst.

## **SCHOOLS IN OUR AREA**

Elementary, Junior & Senior High Schools in Springhill  
Nova Scotia Community College, Cumberland Campus, [www.nsccl.ca](http://www.nsccl.ca)  
Mount Allison University, [www.mta.ca](http://www.mta.ca)  
Dalhousie, Truro Campus [www.dal.ca/agriculturalcampus](http://www.dal.ca/agriculturalcampus)

## **RECREATIONAL AND SOCIAL—SPRINGHILL**

The Dr. Carson and Marion Murray Community Center—Leisure Services, Sports, Youth Center

Website: [www.cumberlandcounty.ns.ca](http://www.cumberlandcounty.ns.ca)

Senior Citizen's Group

Scouts website: Google search: Springhill, NS Scouts, then : [www.saltwire.com](http://www.saltwire.com)

Guides website: [novascotia.coic.ca](http://novascotia.coic.ca)

Physical Fitness Center

Isobel Simpson Heritage Museum/Historical Society website: [www.springhillheritage.ca](http://www.springhillheritage.ca)

Anne Murray Center website: [www.annemurraycenter.com](http://www.annemurraycenter.com)

Springhill Centennial Golf Club

Springhill Memorial Library website: [www.cumberlandpubliclibraries.ca](http://www.cumberlandpubliclibraries.ca)

Miner's Museum website: [www.novascotia.com](http://www.novascotia.com)

Snowmobile and ATV clubs

Hilltop playground (Mechanic St.)

Pit Pond Walking Trail

Lion's Park sports fields and playground

Communities in Bloom and Community Garden

## **NEARBY RECREATIONAL & SOCIAL**

Golfing in Parrsboro, Pugwash and Amherst  
Curling in Amherst  
Downhill and cross country skiing in Wentworth  
Public beaches in Parrsboro and along the Northumberland Strait  
Ship's Company Theatre, Parrsboro  
Live Bait Theatre, Sackville, New Brunswick  
Tantramar Theatre, Amherst  
Showcase Productions, Amherst  
Fundy Geological Museum, Parrsboro ( [fundygeological.ns.ca](http://fundygeological.ns.ca))  
Fossil Cliffs, Joggins ( [jogginsfossilcliffs.net](http://jogginsfossilcliffs.net))  
YMCA, Amherst  
Camp TaWaSi, New Brunswick  
Tatamagouche Center  
Camp Pagweak, Pugwash

## **SHOPPING AND DINING FACILITIES**

Springhill has a number of small shops and services including a Great Canadian Dollar Store, giftware, 2 pharmacies (Guardian & Pharmachoice), Foodland, CIBC, Home Hardware & an auto supply store. Several dining establishments, from sit-down to take-out facilities, exist in the town: Tim Hortons, Subway, Sociables Pub & Eatery, Fencebuster's Cafe, Jade Palace, Piazzano's, Fat Floyd's. Several national chains operate malls and stand-alone stores, located in Amherst (20 minutes away). Larger shopping centres are located in Moncton and Truro (each 60 minutes away).

## **MAIN INDUSTRIES IN AREA**

Agriculture, Surrette Battery [includes production of solar batteries] and RoPak (plastic factory), GOVRC (Golden Opportunities Vocational Rehabilitation Center), forestry, Springhill Penitentiary, Laurentide (paint recycling), and fish farm.

## **VARIOUS ORGANIZATIONS IN THE AREA**

- IODE
- St. Vincent de Paul Society
- Hospital Auxiliary and Hospital Foundation
- Lion's Club
- Masonic Lodge
- Chamber of Commerce
- Ro-win-lea 4-H Club (Brenda Smith 902-597-8728)
- Cumberland Car Club
- AA, NA
- Salvation Army Food Bank

## **NEARBY COMMUNITIES**

Amherst — Amherst is the main business and shopping area for Cumberland County.

Website: [www.amherst.ca](http://www.amherst.ca)

Oxford –Wild blueberry capital of the world. Website: [town.oxford.ns.ca](http://town.oxford.ns.ca)

Pugwash - Lovely seaport on the Northumberland Strait, home of Cyrus Eaton's "Thinker's Lodge"

Parrsboro: website: [parrsboro.ns.ca](http://parrsboro.ns.ca)

Southampton - A small rural community surrounded by forests and blueberry fields, and nestled on the Maccan River. (no web site)

Truro - <https://www.truro.ca>

Halifax –website: [www.halifax.ca](http://www.halifax.ca) Capital city of Nova Scotia is two hours away.

Sackville, New Brunswick: website: <https://sackville.com>

Moncton: website: [www.moncton.ca](http://www.moncton.ca)

With the fixed link, Prince Edward Island is just an hour away... great for a day's excursion.

Website: <https://www.princeedwardisland.ca>

## **OBJECTIVES**

- To foster the core values of Christian love and joy; acceptance and forgiveness of all; personal salvation.
- To provide a welcoming and nurturing environment in which persons of all ages can celebrate the Good News of God's love in Jesus Christ.
- To provide an environment enabling persons of all ages to learn and grow.
- To provide an environment whereby we recognize our gifts and help others recognize theirs.
- To provide an environment for persons to be strengthened for various ministries in the community and the world.

## **ORGANIZATIONAL CHART FOR ST. ANDREW'S-WESLEY UNITED**

The Church Council is made up of 12 members which include the Council Chairman, The church Treasurer, the Council Secretary , 6 trustees, and other members representing the choir, Ministry & personnel and Faith & Service Fellowship.

## **PASTORAL CHARGE PROFILE**

- As a one-point charge, there is one service of worship each Sunday at 11:00 am
- Minute for Mission is read each Sunday by the M & S enthusiast or members of the congregation.
- Lay Readers are available and willing to help and participate in Sunday worship.
- A Sunday School program is offered.
- Congregational Hymn book used is Voices United
- This church has a gifted organist and choir director. The organ is a lovely Casavant pipe organ; there is also a piano in the sanctuary
- Vacation time has traditionally been taken in July & August and no services are held during that time.
- Occasional Men's Choir
- Prayer and Share group meets weekly.

## ST. ANDREW'S - WESLEY UNITED CHURCH

### A Brief History

The history of St. Andrew's-Wesley United Church goes back to the mid and late 1800's when the founding congregations were established in the community of

Springhill. Wesleyan circuit preachers brought the Methodist tradition to the area with the first church building opening for worship in 1864. Likewise, the Presbyterian congregation was housed in its first permanent building in 1874. The present building, St. Andrew's-Wesley, located on Main Street, was built by the Methodists in 1914 and was named the Wesley Church, and in 1925 it came under the umbrella of the United Church of Canada, as did the St. Andrew's Presbyterian congregation which was located on lower McFarlane Street.

Following two major mine disasters and a devastating fire on Main Street in the mid 1950's, the face of Springhill changed considerably. The exodus of people seeking employment left decreasing congregations in both churches and the amalgamation in 1964 created St. Andrew's-Wesley Church. This combination of congregations saw the Methodist church being used for worship, while the Presbyterian Manse became the home for the Clergy (now sold). The lovely Casavant pipe organ which had adorned The sanctuary of St. Andrew's was moved to its present home in the Wesley sanctuary.

Over the years, St. Andrew's-Wesley has become a community anchor. The size of its sanctuary/auditorium easily accommodates large numbers of persons for ecumenical services, other community events and civic functions that require good acoustics. St. Andrew's-Wesley is a community church in another sense, too, in that many citizens who do not attend worship on a regular basis see it as their church.

The members and adherents of St. Andrew's-Wesley consist of approximately 89 families and are a hard-working, caring and faithful community of God's people with the common goal to make God known among themselves and to others beyond their circle, and to enjoy and serve Him as His own people.

### **Vision**

The congregation of St. Andrew's-Wesley United Church visualizes an accepting Church, organized and working in partnership with the congregation, minister and Regional Council to provide a strong Christian anchor for this community and all of God's world.

### **Mission Statement**

The mission of St. Andrew's-Wesley United Church is to be with each other and be adherents of God's word, enabling persons of all ages to become disciples of Jesus through worship and service.

## RESOURCES

### OUR BUILDINGS

#### **St. Andrew's-Wesley United**

The church, built in 1913, is an example of Akron-Auditorium. The building consists of three levels and bell tower. It houses the sanctuary, which seats 350 with further overflow capabilities in the meeting hall; Ladies Parlour; four washrooms, library, a well-equipped kitchen, office which is available for a Study if desired, choir room and storage rooms. The basement area off the kitchen is used for social activities as well as for fund raisers for the church. The church has an oil-fired furnace, suspended lights and ceiling fans. The building is covered in vinyl siding, There is an adjoining paved parking lot. A ramp allows for accessibility on the main floor. Beautiful stained glass windows adorn the sanctuary. Due to damage done over the years by Maritime weather, three large windows in the sanctuary have recently added protective shields against the elements.

There is a Casavant Pipe Organ in the sanctuary as well as a Heintzman Piano. There is also a piano in the meeting hall adjacent to the stage. There is a TV, VCR, photocopier and overhead projector as well as a microfilm reader available for presentations. Recent additions include a new sound system and fire alarm system.

There are also hand bells and equipment which have been used in the past, but await their renewed life under an appropriate director.

### OUR FINANCES

Based on 2019 annual report, presently, St. Andrew's-Wesley distributes 82 weekly offering envelopes and has 17 contributors on PAR with total revenue through all sources.

**Mission & Service Givings** for 2019 were \$2920.

For further financial details, please see the attached financial statements and 3 year budget projections.

### **Property**

St. Andrew's-Wesley property and equipment is valued at \$325,500. The replacement insurance is valued at \$2,195,000. Maintenance continues on an "as needed" basis.

#### **Capital**

St. Andrew's-Wesley: \$92,900 of which \$75,000 is subject to trust.

## Patterns of Giving

We see the continued loyalty and generous support of our communities of faith; enthusiastic fundraising by individuals and groups; response to various outreach programs.

We enjoy Minute for Missions which is read each week and we support our M & S program well, including special appeals.

We are fortunate to have various congregational members who are blessed with talents they are willing to share. We give thanks for those among us who are gifted in carpentry, organization, visitation, finances, music, teaching, decorating sanctuary for special times in the church year, baking and on and on.

### STAFF

St. Andrew's-Wesley employs 3 salaried persons: Ministry Personnel (ADP), Organist and Janitor (who are both paid on a monthly basis).

The Church Treasurer as well as the Bulletin Secretary and general church Secretary are all volunteers.

### OUR OUTREACH MINISTRIES

Mission and Service, Regular and Special Projects

Mitten Tree in support of the Springhill schools

The local food bank offerings

Outreach with cards and letters to those who are ill

Provide receptions for grieving families

Give to the breakfast & healthy snack program at the local schools.

World Day of Prayer service with offering for Women's Inter-Church Council of Canada

Provide services & music at the nursing home shared with the other churches in the area. Our choir is very active in fundraising, performing at funerals and provides outstanding music for all services at St. Andrew's-Wesley as well as other locations.

We share our parking lot with Ross Anderson Pharmacy & they, in turn share expenses for repairs and snow removal with St. Andrew's-Wesley.

St. Andrew's-Wesley United Church has a Facebook page managed by a member of the congregation.

Micah 6: 8

'He had told you, O mortal, what is good; and what does the Lord require of you but to do justice, and to love kindness, and to walk humbly with your God!

We believe this scripture lives within us, speaking of qualities that matter to God, to us, and the communities we live within as we share our ministry.

## **Our congregation is good at .....**

Raising money through various fund-raisers by talented, generous people. Our people have a passionate desire to retain their church. It is the driving force our members employ to excel at fundraising.

While not large in numbers, the people are friendly and compassionate with a generosity of spirit that shows through our community outreach, our Mission and Service givings. We enjoy our fellowship, the socializing, the 'Sense of Family' that keeps us in touch with each other. We love the gift of laughter and are thankful that we can have humor while keeping our spiritual values.

We enjoy our church music and our choir, knowing that our music ministry is reflective of the many others who use their gifts and individual skills for the good of the church.

We have a good rapport with the citizens of Springhill who are very supportive of our efforts, as we are of theirs.

Our church bells ring out each Sunday at the beginning & end of our service, as well as for special events.

Whenever there has been any need in the community, we have always helped out in any & every way possible. We have discovered that we have grown stronger as we worked together to solve problems under difficult circumstances. We work hard to achieve goals we have set for ourselves and try to be good examples of living our faith.

## **In five years what we hope to see happening in this congregation is...**

A steady growth in attendance that will allow us to have a larger congregation, working, singing and enjoying the church family together as we serve and worship God..

We hope to have a dynamic ministry that will have a meaningful effect on our community — that we will not only still be here but that we will be a vibrant church which will remain debt free.

## **POSITION DESCRIPTION**

**Position Title:** Half-Time Ministry Personnel (20 hours per week)

### **Areas of Responsibility**

#### **Pastoral Care**

Funerals and families in bereavement  
Visit hospitals and nursing homes

#### **Worship**

Includes one service a Sunday  
Marriages/Funerals/Communion/Baptisms  
Open to involving, lay persons in the worship service  
Willingness to be creative in worship

#### **Christian Education**

Baptism and Marriage preparation  
Confirmation and membership classes  
Ability to educate around United Church policy and polity  
Children's time when required

#### **Administration**

Expected involvement in Regional Council, along with 1 lay member.  
Minor church-related administrative duties done by volunteers.

#### **Outreach**

Involvement in local Ministerial Association which includes participation in community services, such as Remembrance Day & Miners' Memorial (Davis) Day.  
Emergency outreach within the community as needed.

#### **Ratings for an average week:**

- |                  |                |     |
|------------------|----------------|-----|
| <b><u>1.</u></b> | Worship        | 50% |
| <b><u>2.</u></b> | Pastoral Care  | 40% |
| <b><u>3.</u></b> | Administration | 10% |

Guidelines only

## MINISTRY AND SKILLS PROFILE

**Aim:** to create a ministry profile description based on the 5 objectives of ministry within the United Church of Canada: "WORD" "SACRAMENT" "PASTORAL CARE" "CHRISTIAN EDUCATION" "SERVICE & JUSTICE".

### Desired Qualities of Ministry Personnel:

- A comfortable people person; facilitate human connection
- A good communicator
- A leader and encourager in spiritual growth
- An easy rapport with children, youth & folks of all ages
- Caring pastoral care with help of congregation
- Participation with the people in church activities
- Ability to develop and encourage lay ministry
- Music appreciation
- Preaching ability

## TERMS PROFILE

**Position: Seeking a member of the Ministry Personnel to fill a half-time vacancy.**

- Salary as determined by the United Canada of Canada.
- Travel rate as determined by General Council
- Benefits will be paid as determined by the United Church of Canada, Federal & Provincial Governments.
- -Reasonable moving expenses will be paid.
- Basic telephone will be offered.
- Financial support for Continuing Education and Learning Resources budgeted as \$721.00. Included in this amount would be internet access, purchasing of books and worship resources.
- Secretarial assistance will be provided as needed: ie bulletins copied and ready for worship, congregational letters prepared and distributed. This church has a volunteer secretary.
- Time off standards: vacations have traditionally been taken in July and August (10 Sundays). Study leave to be negotiated. Compassionate, Bereavement, Parental and Sabbatical Leave in conjunction with Ministry and Personnel Committee and United Church policy.

**VACANCY:** September 2020

## **RECOMMENDATIONS OF THE Community of Faith**

It is understood that this report is subject to the Regional Council 15.

1. That Regional Council 15 declares a half-time vacancy for the Springhill Pastoral Charge, effective September 1, 2020
2. That the Springhill Pastoral Charge, having received the report of the Community of Faith Story and having reviewed its recommendations, requests that Regional Council 15 constitute a joint Search Committee to fill declared vacancy.
3. That the Community of Faith Committee members, having completed this phase in creating a new Community of Faith story, are to be thanked for their many hours of work. As yearly updates will be required in the future, this committee, or others appointed to this Community of Faith Committee shall be available to work with Regional Council 15, if necessary.

ST.ANDREW'S-WESLEY UNITED CHURCH  
INCOME AND EXPENDITURES  
JANUARY, FEBRUARY, MARCH & APRIL 2020

RECONCILED BALANCE: January 1, 2020 \$13,042.06

REVENUE

<u>Weekly-Local</u>		\$8,742.23	
	-M&S	229.30	
	-Plate Offering	43.00	
	-Church Improvement	144.00	
<u>Specials-Local Easter</u>		990.00	
	-M&S Moss Investment	132.81	
<u>Memorials-</u>		734.00	
<u>PAR-Local</u>		3,254.00	
	-M&S	244.00	
	-Church Improvement	252.00	
<u>Investment Income</u>		915.41	
<u>Special Donations-Anonymous</u>		275.35	
<u>Special Funds-Breakfast &amp; Snack Program</u>		30.00	
<u>Miscellaneous-Voided Cheque</u>		100.00	
	-Ross Anderson Pharmacy	<u>900.00</u>	<u>16,986.10</u>
			\$30,028.16

EXPENDITURES

<u>Salaries-Minister</u>		10,197.20
	-Organist	2,652.00
	-Janitor	1,815.86
<u>EI-Church</u>		324.38
<u>CPP- Church</u>		123.88
<u>HST-</u>		1,411.10
<u>Utilities-Telephone</u>		290.56
	-Fuel	6,859.99
	-Power	558.85
<u>Minister's-Mileage Allowance</u>		523.80
	-Phone Allowance	300.00
	-Continuing Education	180.00
<u>Miscellaneous-United Church Allocation</u>		832.25
	-ADP Canada Service Charges	105.77
	-M&S Remittance	529.11
	-Bank Service Charges	222.50
	-Water & Sewer Charges	153.21
	-2019/2020 High School Bursary	100.00
	-Copyright Insurance	141.00

<u>Church Maintenance-Furnace &amp; Front Door Lock</u>	234.45	
<u>Church Supplies &amp; Expenses-Office</u>	769.55	
-Fire Extinguisher & Alarm Monitoring	450.75	
-Shoveling, Cleaning, Salt, etc.	<u>442.77</u>	<u>29,218.98</u>
<u>Reconciled Bank Balance April 30, 2020</u>		<u>\$809.18</u>